



## LESSON 4:

# School-Wide Expected-Behavior Matrix

---

“Raise your words, not your voice.  
It is the rain that grows flowers, not thunder.”

—Rumi

# Choose Three to Five Character Traits

- responsible
- respectful
- kind
- good citizen
- takes ownership
- accountable
- trustworthy
- caring
- safe
- honest

Write down 5 character traits:

---

---

---

---

---

*Try creating a catchy acronym like:*

**R – Respectful**  
**O – Ownership**  
**A – Accountable**  
**R – Responsible**

# Expected-Behavior Matrix

Create an Expected-Behavior Matrix. Use the chart as a guide. A blank chart is available on the next page.

In the first column, list the **character traits** you've chosen for your school, such as the popular Be Respectful, Be Safe, Be Responsible.

Next, fill the top row with **distinct environments** in your school, such as bus, hallway, cafeteria, recess, bathroom, and classroom. List in the corresponding boxes **what each trait should look like in each environment**. These are your expected behaviors.

Here is a partially completed sample to show you how to fill in your own chart.

**ENVIRONMENT**

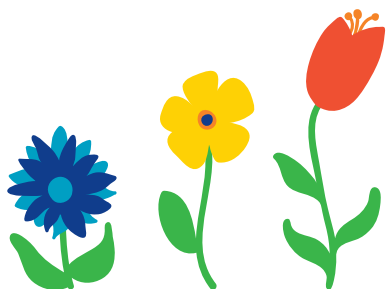
	bus	classroom	hallway
<b>CHARACTER TRAITS</b>	be respectful	listening to the bus driver and keeping our voice quiet	
	be safe	staying seated and keeping hands and bodies to ourselves	
	be responsible	keeping things in backpacks and keeping the bus clean	

Finally, chose a school-wide **reinforcement system**. Get creative. You can even connect your character-traits acronym to your reinforcement system.

Give your reward a catchy name so it sticks.

# Expected-Behavior Matrix Chart

		ENVIRONMENT				
CHARACTER TRAITS						



## CHARACTER TRAITS

- responsible
- respectful
- kind
- good citizen
- takes ownership
- accountable
- trustworthy
- caring
- safe
- honest

